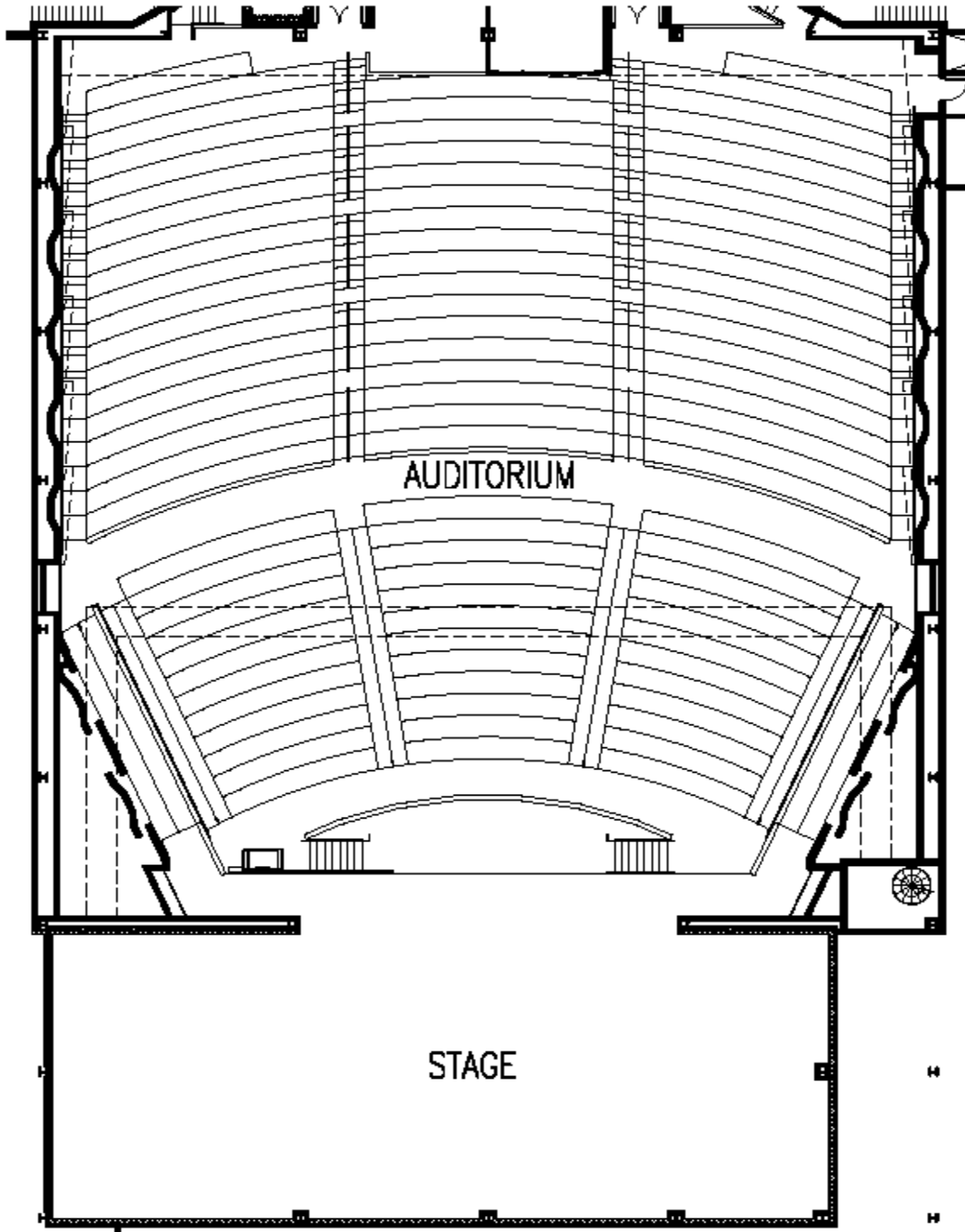


# AUDITORIUM



# Auditorium Technical Specifications

## 1. Seating –

- \*fixed seating for 1508
- \*16 additional handicap access spaces

## 2. Stage –

- \*29 ft. deep from proscenium wall to rear traveler, 39 ft. to rear wall
- \*50 ft. wide by 24 ft. high proscenium opening
- \*stage manager's panel located stage right
- \*clear-com communications to all production areas

## 3. Rigging –

- \*grand drape is split and travels on and off via hand pull, drape is dead hung
- \*stage is hung with four sets of black velour legs and three borders
- \*upstage black velour travelers
- \*6 counter weight empty battens available
- \*4 sound shells on counter weight battens, shells have integral lighting
- \*3 motorized electric battens
- \*2 dead hung black velour side tabs
- \*scrim.....
- \*cyc.....

## 4. Loading Dock & Backstage –

- \*loading doors: 12 ft. by 12 ft.
- \*loading dock is elevated (30" tall with bumper pads)
- \*located approximately 15 ft. from stage left

## 5. Dressing Rooms –

- \*two 30 ft. by 22 ft. dressing rooms, located adjacent to stage left, each equipped with make-up mirrors, shower and restroom

## 6. Electrical –

- \*100 amp disconnect panel located at loading dock (stage right)
- \*200 amp disconnect panel located at loading dock (stage right)

## 7. Sound/Video –

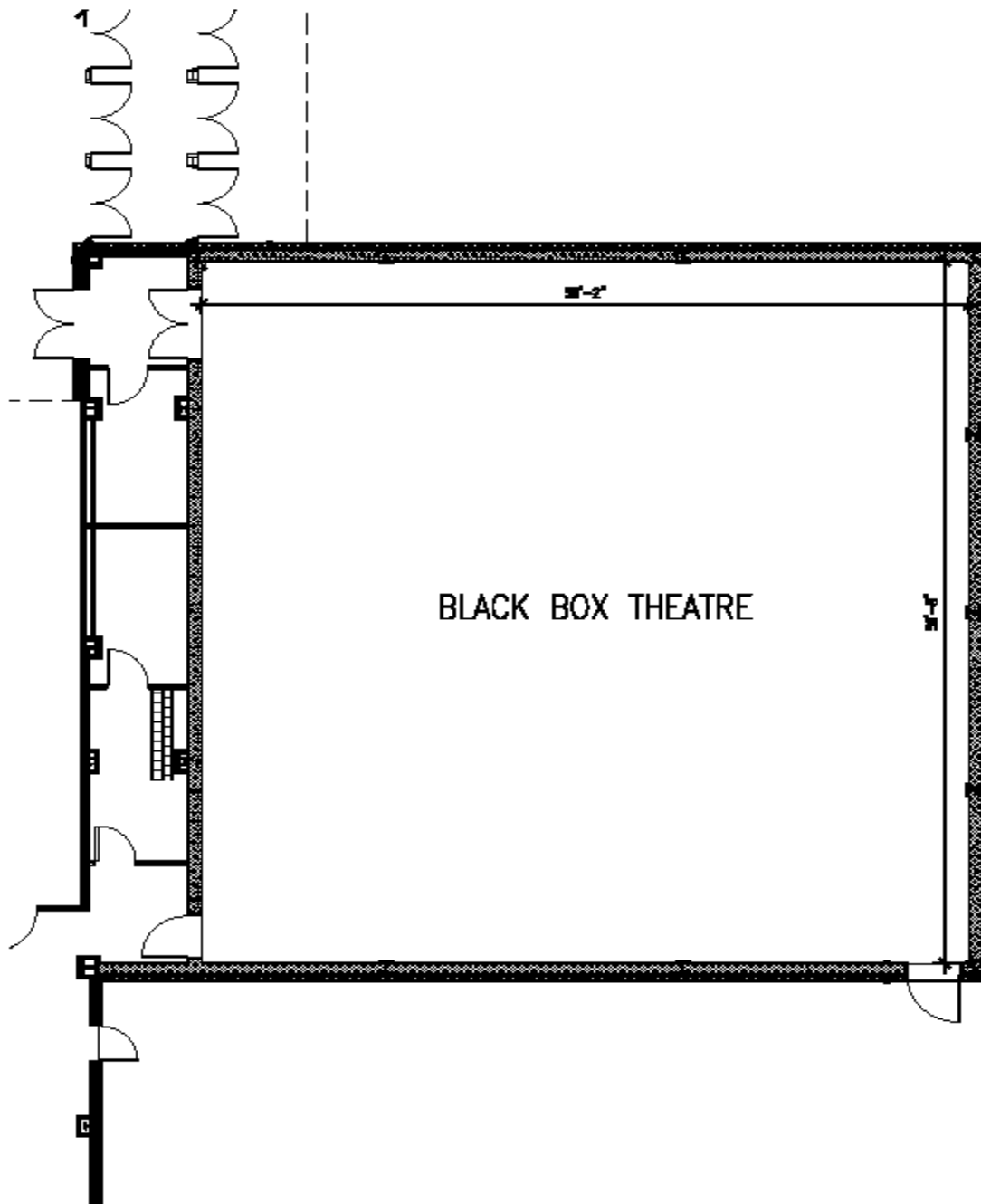
- \*Yamaha LS9-65 digital sound board at sound booth in rear of theater
- \*28 microphone inputs on stage
- \*9 overhead hanging stage microphones
- \*4 portable stage monitors
- \*4 portable loud speakers for sound effects (outputs in each corner of the audience)
- \*8" under floor pass-through conduit from stage to mid-house mix position (road show position)

- \*Clear-Com 2 channel production intercom system
- \*18 wireless microphones
- \*24 hardwired microphones
- \*recording capabilities
- \*two '20 x 11'-3" projection screens mounted at the sides of the proscenium served by two Sony projectors at the rear of the audience
- \*video system controlled by a wireless Crestron control system
- \*video inputs on stage, at mid-house mix position, and in the control room at the rear of the theater
- \*video and audio monitoring from theater to back of house locations

## 8. Lighting –

- \*programmable computerized lighting console (ETC Ion with 2x10 Fader Wing)
- \*1,000 channels
- \*10,000 cues/99 cue lists
- \*house light plot determined by owner, initial setup 15 area
- \*two 1200 watt Catato HMI follow spots
- \*18 Source 4 – 19"
- \*24 Source 4 – 26"
- \*21 Source 4 – pars
- \*30 Source 4 – panels
- \*24 500watt work lights
- \*front of house catwalk – 24 cir
- \*2 mid-house forms – 2 cir each
- \*apron elec – 12 cir
- \*apron forms – 2 cir each
- \*over stage electrics – 30 cir each

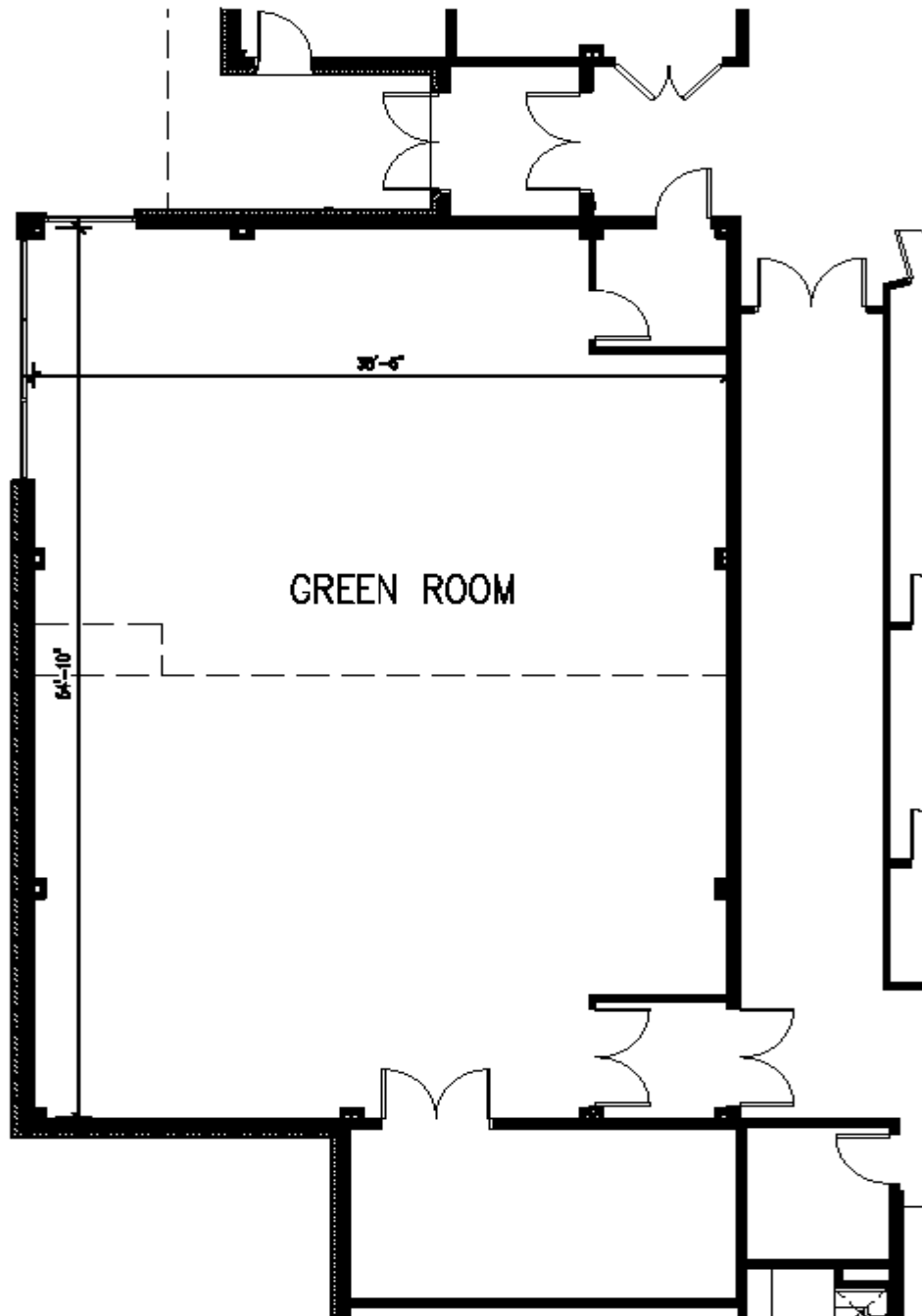
# BLACK BOX THEATRE



# Black Box Theatre Technical Specifications

1. Seating –
  - \*200 chairs for flexible seating
2. Stage –
  - \*walk-along black velour curtain on one end of Black Box Theatre
3. Sound/Video –
  - \*Allen and Heath Mix Wizard 14 channel mixer
  - \*ClearCom 2 channel production intercom system
  - \*audio monitoring from Black Box Theatre to back of house locations
  - \*Tannoy series V12 overhead loudspeakers
  - \*16' x 9' projection screen served by a Sanyo projector
4. Lighting –
  - \*ETC Ion 1000 lighting control console with monitors
  - \*1 Radio remote focus unit
  - \*SR48, 96 dimming circuit dimming rack, populated with 24 dual 20A dimming modules. 48 dimming circuits may be hot at one time. Dimming modules may be moved around in dimming rack
  - \*1 unison portable LCD architectural preset control
  - \*36 2-circuit outlet boxes (mounted on lighting catwalk)
  - \*4 4-circuit outlet boxes (mounted on lighting catwalk)
  - \*16 ETC Source 4 Ellipsoidals, 36 degree fixture
  - \*16 ETC ParNel fixtures

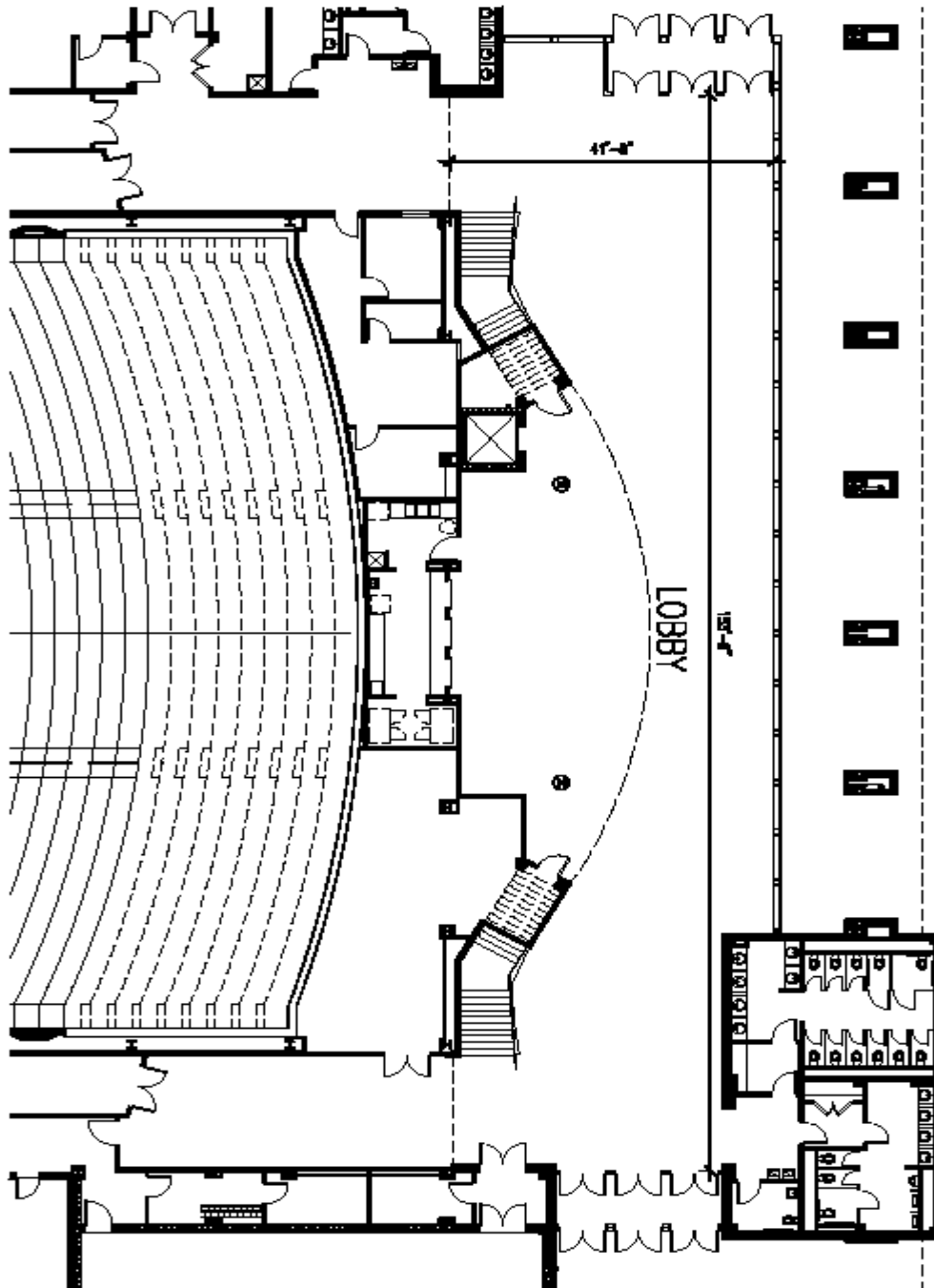
# Green Room



# Green Room Technical Specifications

1. Seating –  
\*100 patrons
2. Audio – Visual

### Foyer / Lobby





# Foyer/Lobby Specifications

1. Seating –
  - \*75 patrons for special catered events
2. Audio – Visual
3. Concession Stand –
  - \*coffee and tea maker
  - \*ice machine
  - \*sink
  - \*several outlets for crock-pots, microwaves, etc.
  - \*renters are responsible for bringing all food and beverage in and for clean-up after the event. No food may be stored in the concession stand after the event has ended. All food and beverage brought into the concession stand should be in a sealed container or wrapping of some kind.